

# EA017

4 CHANNEL OSCILLOSCOPE TEST HEAD ADAPTER



**OPERATION GUIDE**

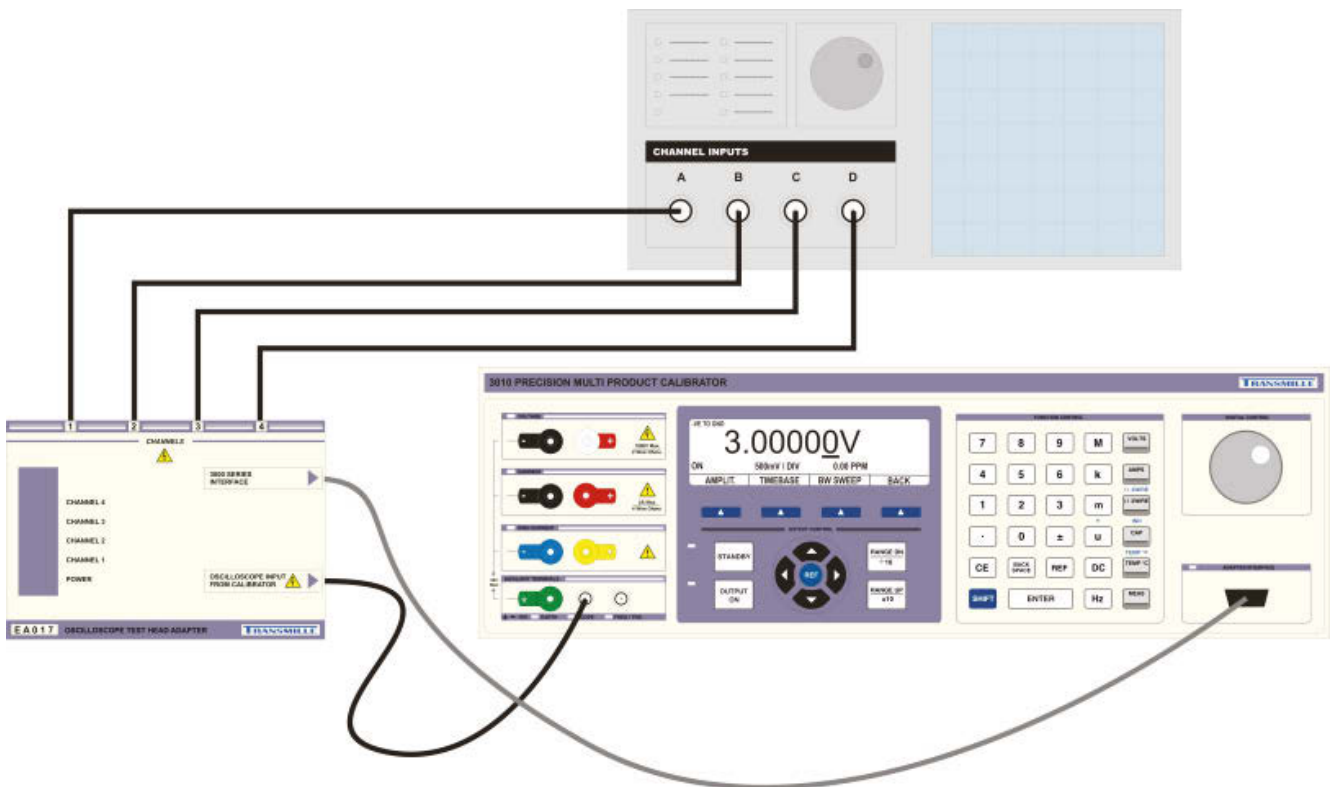
### Overview

The EA017 Oscilloscope Test Head Adapter provides 4-channel switching to a oscilloscope UUT (Unit Under Test).

This external adapter connects to the 3000 Series calibrator via the adapter interface and the calibrator oscilloscope BNC output and provides outputs from the 4 dedicated BNC channel BNC connections.



### Connection

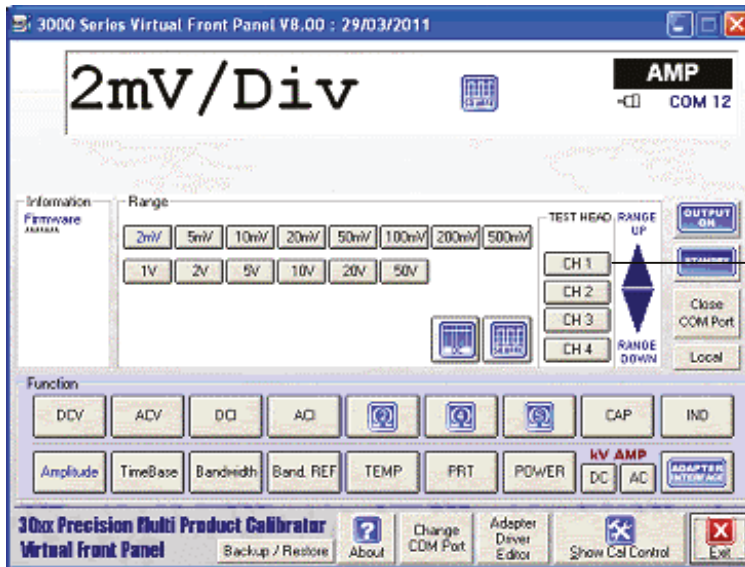


- Connect the EA017 to the 3000 Series calibrator adapter interface connector using the supplied serial connection lead.
- Connect the BNC connector marked 'OSCILLOSCOPE INPUT FROM CALIBRATOR' to the calibrator scope output BNC connector.
- Connect the 4 channel outputs from the EA017 adapter to the oscilloscope channel inputs

### Using the EA017

The EA017 has 4 channels which can be remotely switch using either the 3000 Series Virtual Front Panel or the ProCal calibration software optional software packages.

### 3000 Series virtual Front Panel

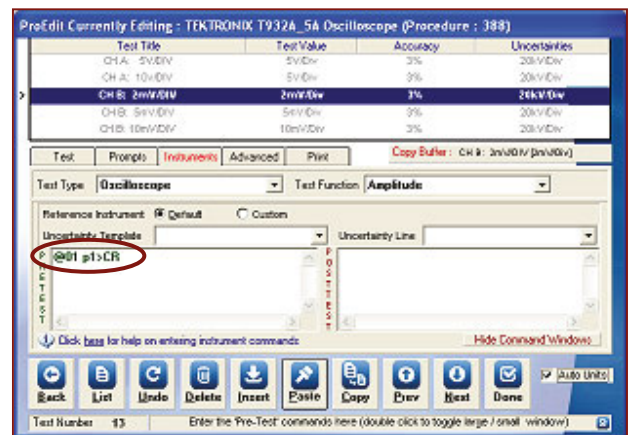


Select EA017 channel output using the channel select buttons.

### ProCal Calibration Software

Using ProEdit, procedures can automatically switch EA017 Oscilloscope Test Head channels.

Simply edit the required procedure and add commands in the 'Pre-Test' command window as follows :



Channel	Command
CH 1	@01 p1>CR
CH 2	@01 p2>CR
CH 3	@01 p4>CR
CH 4	@01 p8>CR

Where @01 = Calibrator : pxx = Channel select command : >CR = Terminator