



ProCal V4.51.21 provides a new function to allow the calibrator and multimeter references to the selected on start up.

Calibrator / DMM / Electrical Calibrator lists

The available calibrators and multimeters to select from are configured in two database files :

- **CalibratorList.mdb**
- **DMMList.mdb**
- **ELECList.mdb**

Database format

Name	Type	Size
USER_ID	Text	50
INST_DESCRIPTION	Text	40
SERIAL_NO	Text	20
CERT_NO	Text	15
CAL_DATE	Text	8
CAL_PERIOD	Text	3
IEEE\RS232	Text	5
VALUE	Text	15
Location	Text	2
LabProc	Text	80

These databases should be located on the server in the **x:\ProCal\Certificates** folder (where x is the server drive)

List of calibrator models to be used in populating CalibratorList.mdb

3010A Precision Multi-Product Calibrator
3041A Precision Multi-Product Calibrator
3050A Precision Multi-Product Calibrator
3010 Precision Multi-Product Calibrator
3041 Precision Multi-Product Calibrator
3050 Precision Multi-Product Calibrator
9041A Transportable Multi-Product Calibrator
9050A Transportable Multi-Product Calibrator
9041 Transportable Multi-Product Calibrator
9050 Transportable Multi-Product Calibrator
2006A Precision Multi-Product Calibrator
2041A Precision Multi-Product Calibrator
2050A Precision Multi-Product Calibrator
2006 Precision Multi-Product Calibrator
2005 Precision Multi-Product Calibrator
2041 Precision Multi-Product Calibrator
2040 Precision Multi-Product Calibrator
2050 Precision Multi-Product Calibrator
9821 Multifunction Calibrator
9822 Multifunction Calibrator
9823 Multifunction Calibrator





List of DMM models to be used in populating DMMList.mdb

8091 Multimeter
8081 Multimeter
8080 Multimeter
8071 Multimeter
8881 Multimeter
8871 Multimeter
8840A Multimeter
5075 Precision Multimeter

List of Electrical Test Calibrator models to be used in populating ELECList.mdb

3200A Electrical Test Calibrator (STD)
3200A Electrical Test Calibrator (HI)
3200 Electrical Test Calibrator (STD)
3200 Electrical Test Calibrator (HI)
2100 Electrical Test Calibrator
2100 Electrical Test Calibrator (STD)
2100 Electrical Test Calibrator (HI)
3200A Electrical Test Calibrator (STD)
3200A Electrical Test Calibrator (HI)

Simply populate the two database files with the list of reference and associated data to make them available in ProSet and ProCal.

Example – CalibratorList.mdb

USER_ID	INST_DESCRIPTION	SERIAL_NO	CERT_NO	CAL_DATE	CAL_PERIOD	IEEE/RS232	VALUE	Location	LabProc
TE1000	3010A Precision Multi-Product Calibrator	1001	00001	01/01/13	52	COM1			
TE2000	3041A Precision Multi-Product Calibrator	1002	00002	01/02/13	52	COM2			
TE3000	3050A Precision Multi-Product Calibrator	1003	00003	01/03/13	52	COM3			

Example – DMMList.mdb

USER_ID	INST_DESCRIPTION	SERIAL_NO	CERT_NO	CAL_DATE	CAL_PERIOD	IEEE/RS232	VALUE	Location	LabProc
TE4000	8081 Precision Multimeter	1004	00004	01/01/13	52	COM4			
TE5000	5075 Precision Multimeter	1005	00005	01/02/13	52	COM5			

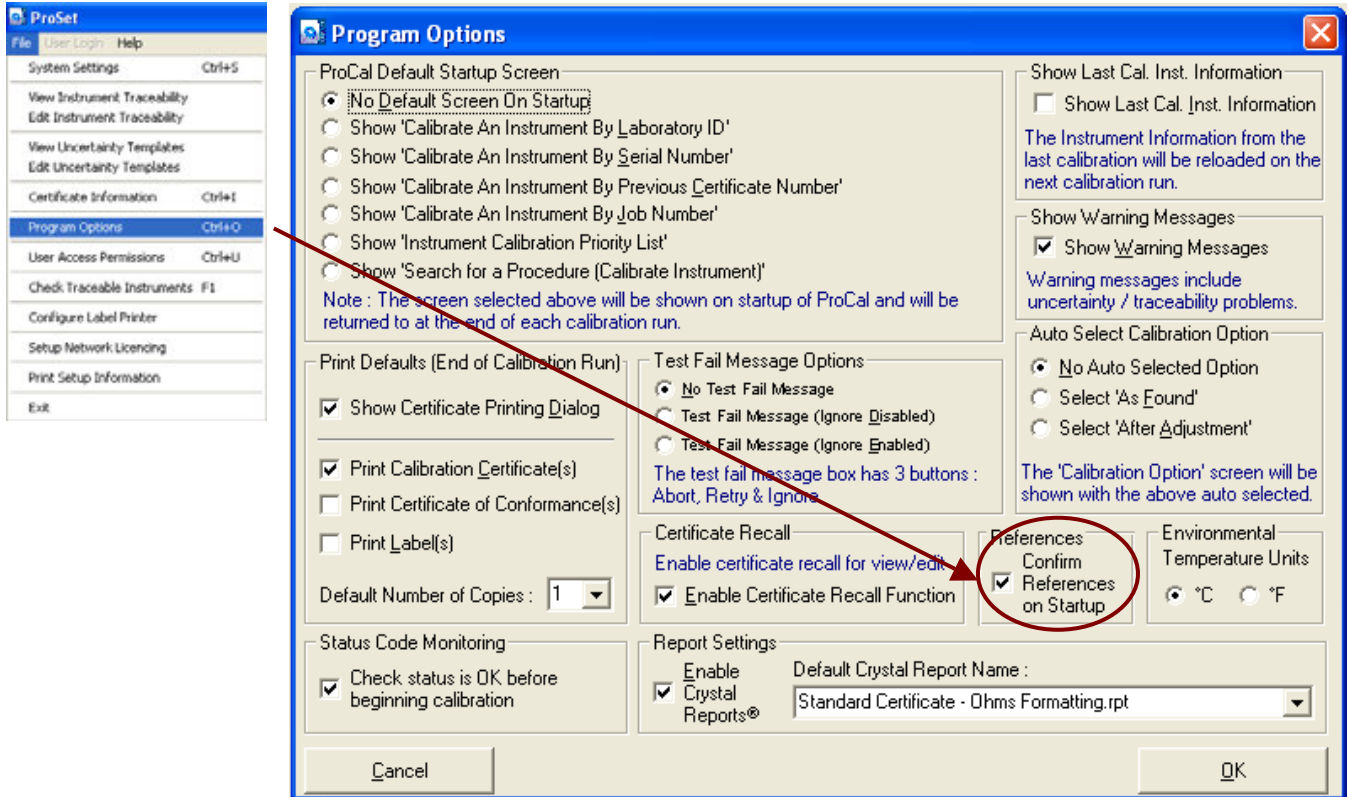
Example – ELECList.mdb

USER_ID	INST_DESCRIPTION	SERIAL_NO	CERT_NO	CAL_DATE	CAL_PERIOD	IEEE/RS232	VALUE	Location	LabProc
TE1300	2100 Electrical Test Calibrator	3001	30001	01/01/13	52	COM1			
TE2300	3200A Electrical Test Calibrator [HI]	3002	30002	01/02/13	52	COM2			
TE3300	3200A Electrical Test Calibrator [STD]	3003	30003	01/03/13	52	COM3			

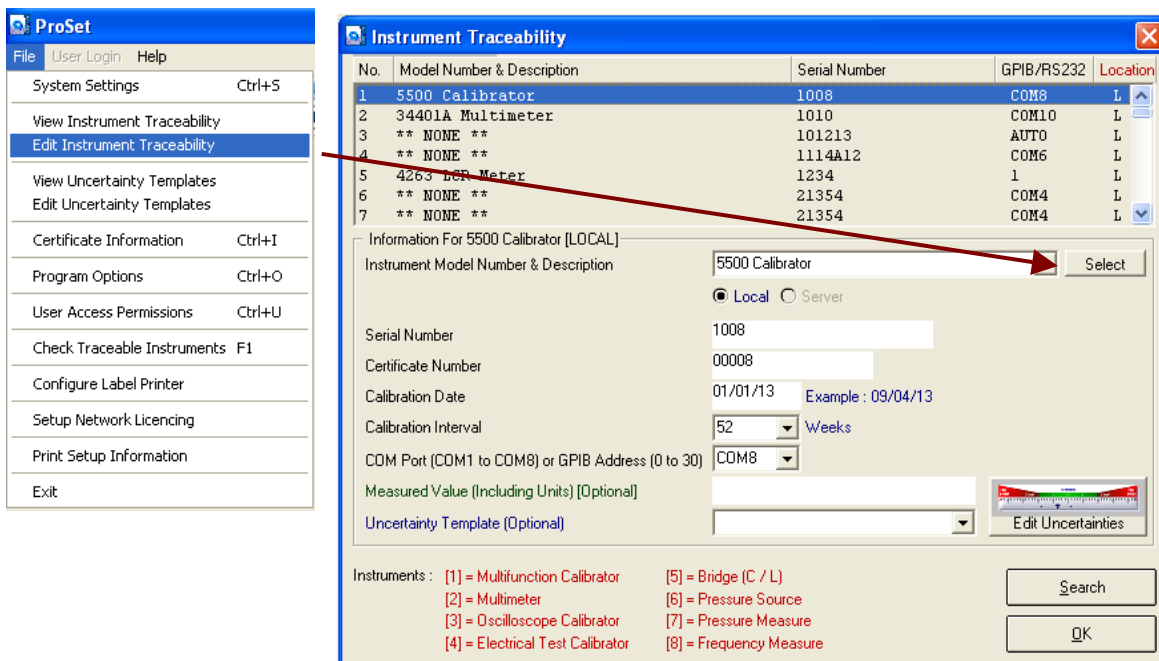


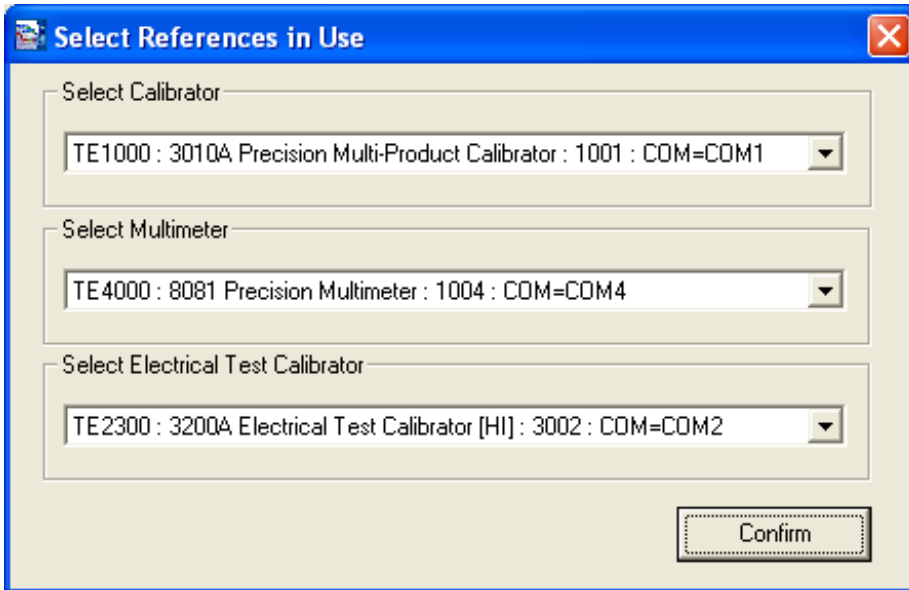
Enable reference selection

ProSet enables the reference election screen to be enabled as follows :



Reference Selection in ProSet





Select the reference calibrator, multimeter and electrical test calibrator from the drop down lists, then click confirm to save to the database.

Note : If a specific type of calibrator or meter is not used, ensure **** None **** is selected to indicate this type of equipment is not in use.