



# DYMO LABEL PRINTER INSTALLATION

USING THE TRANSMILLE SOFTWARE CD

In order to use the **DYMO** *LabelWriter* range of printers with Transmille software please use the Transmille software CD to install the DYMO software.



Please *do not* use the DYMO CD supplied with the printer – the DYMO software provided on the Transmille CD contains the correct version.

## Installing the printer

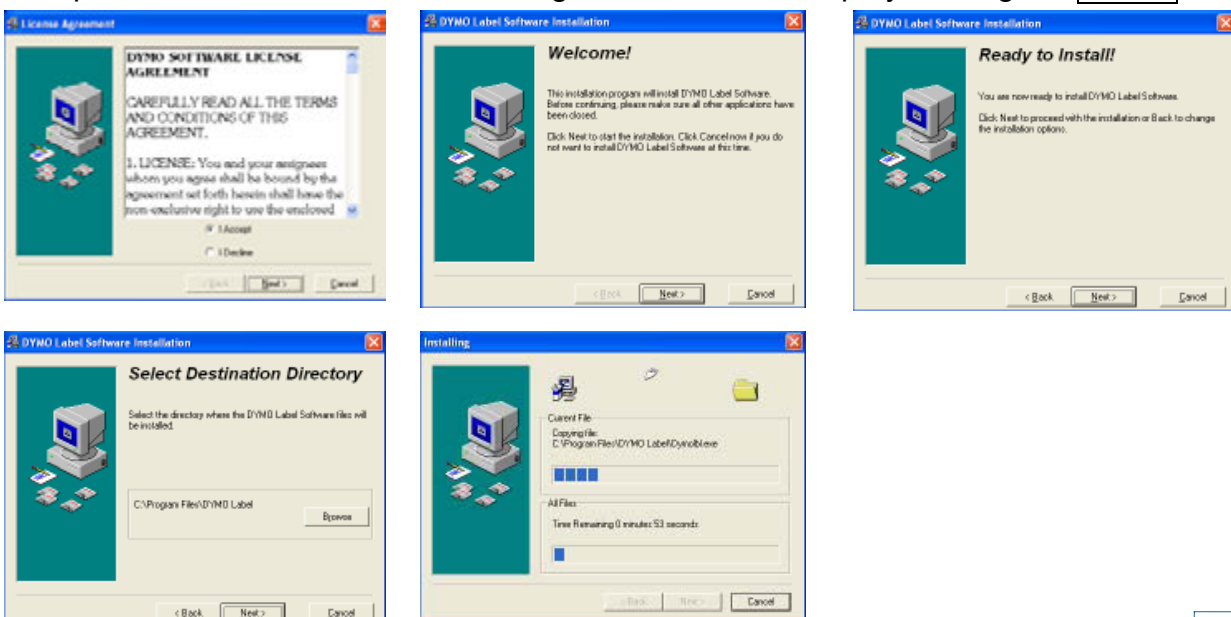
Insert the Transmille software CD and select **INSTALL DYMO LABEL PRINTER** option, Once the installer screen appears (right hand screen below) click to begin installation.



Once the drivers are installed the label software installation will begin automatically :

## Installing the printer software

The printer software installation will begin – follow each step by clicking the **Next >** buttons :

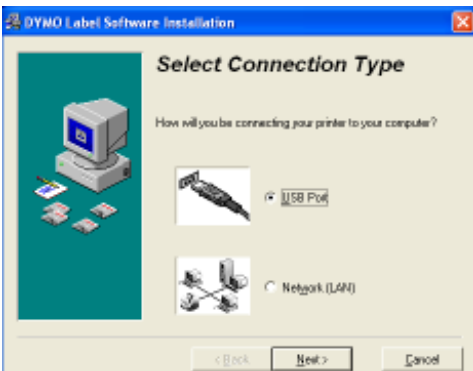




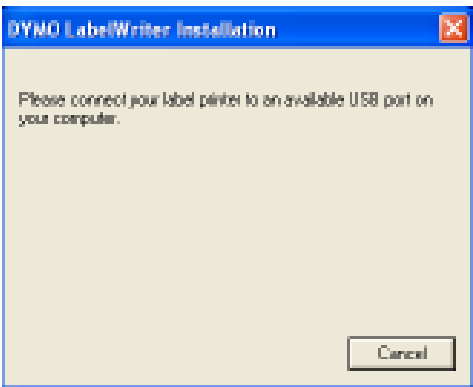
# DYMO LABEL PRINTER INSTALLATION

## USING THE TRANSMILLE SOFTWARE CD

### Final Steps

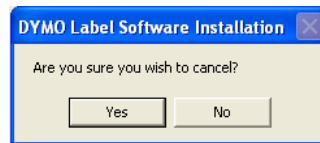


Select USB port

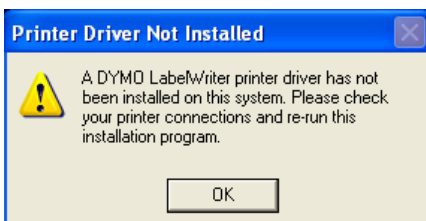


Connect printer to USB port on computer then click **CANCEL**

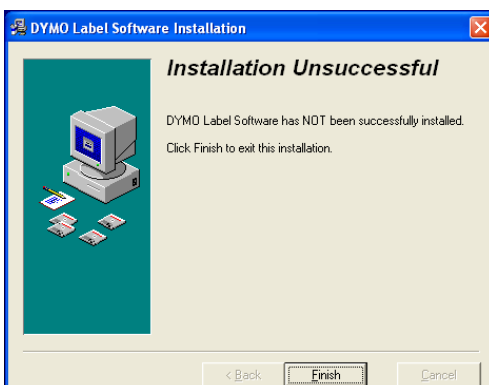
A WARNING WILL BE SHOWN AS BELOW - CLICK **YES** TO PROCEED



After confirming the cancel operation, the following message will be shown – this is OK as the printer driver will be installed in a later step.



Finally an 'unsuccessful installation' message will be displayed – this is OK as the printer driver will be installed in the next step.

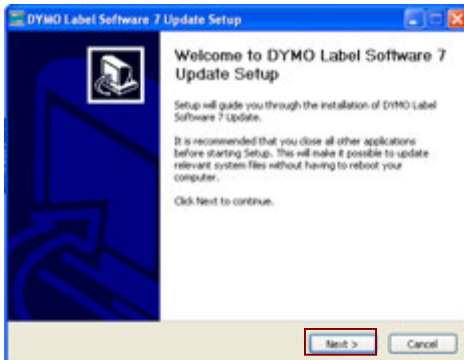




# DYMO LABEL PRINTER INSTALLATION USING THE TRANSMILLE SOFTWARE CD

## Installing the printer drivers

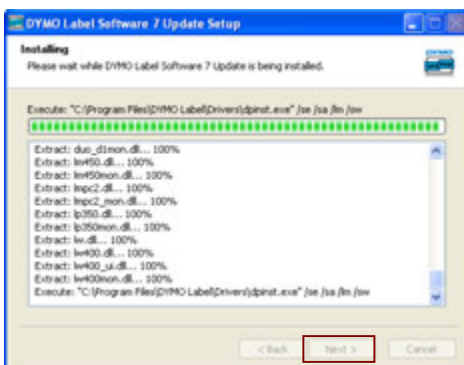
Click 'Next >'



Click 'I Agree'



Click 'Next >'



Click 'Finish'

